



NOVEMBER 2016

Light in the Shadows

"Let your light shine before men, that they may see your good deeds and praise your Father in heaven." Matt. 5: 16

A Different Way Of Being Church

"Come gather 'round people wherever you roam and admit that the waters around you have grown...For the times, they are a-changin'."



Doug and I own about six Peter, Paul & Mary CD's as a part of our collection. This song written by Bob Dylan in his 1964 album of the same name, is one of my favorites from our CD. About a week ago, Thundarr (our cat) and I were outside one morning and taking in the all the changes the autumn season brings. While sitting on a picnic table bench with Thundarr on top of the table (of course!), I found myself reflecting on the movements of change in nature I was seeing. Trees, once full of leaves, are becoming bare. The grass beneath our feet, once green, now receives the leaves fallen from the trees. The mild and sometimes strong winds that are blowing plus the coolness of the air all hint of the winter to come. As I was thinking about all this, I could hear Peter, Paul & Mary singing Bob Dylan's song in my head.

"Our Scriptures teach that God often uses the 'outsider' to challenge God's people on the 'inside' to a different way of seeing and being the Church."

—Rev. Heidi L. Edson

all of our attention. He asked us a question about how it is we view people who are on the outside of St. Luke's but who may be interested in "checking us out." Bishop

Continued on page 2

Reserve Quickly for Holiday Wreath-Decorating Workshops

Get ready for the holidays by decorating a pre-made Evergreen wreath with specially collected greens, natural materials, bows, and other decorations, plus all the wire, glue guns, and equipment necessary to make the decorating fun and successful. Open to the public, as well as to friends and parishioners, the workshops will take place in Willard Hall and once again benefit both the church and the Chester Conservation Committee's Student Environmental Scholarship Fund.



So mark your calendars, spread the word, and contact me quickly to reserve your spot. Space is limited, so people must pre-register. Choose from four different workshop sessions: Thursday evening **November 17, 6:30-8 PM**; Friday **November 18: 9-10:30 AM or 1:00-2:30 PM**, and Saturday **November 19, 9-10:30 AM**. Each session will offer homemade refreshments, great camaraderie, and all the essentials to create a very personal, one-of-a-kind wreath. Men and women are welcome to come alone or register with a friend or group. A \$5 early-bird discount will apply to those who preregister and pay by Monday November 7. After that, the fee per wreath will be \$40.

Checks should be made out to St. Luke's Church, designated for the wreath workshop, and mailed to Lillian Willis, P. O. Box 318, Chester, VT 05143. For additional information, please feel free to call or email me.

Continued on page 3

From the Senior Warden

November, Already?



The year is winding down way too fast for me with Thanksgiving and Christmas on the horizon. November, like October, is another busy month in our faith community. Early this month the Rector and Vestry will be participating in the Annual Mutual Ministry Review under the guidance of Lynn Bates, Canon to the

Ordinary. This is not a performance review of the Rector and the Vestry, but a time to look at the total ministries at St. Luke's. Where they have been effective and where they have been less effective. It is also an opportunity to set some goals we all can work on in the coming year.

St. Luke's 2017 Stewardship Campaign is well underway as you may have noted from the "reflection letters" you received from the committee in the past few weeks. Pledge cards will be in the mail shortly and the Ingathering Sunday is November 20th. Be sure to read Doug's article on this page.

A new opportunity for "outreach" began in October and will continue once a month on Tuesdays, with trips to the Vermont Foodbank in Brattleboro to help with sorting, checking dates, organizing and repacking donated food items. If you wish to be a volunteer, there is a form that needs to be completed. Speak to either Jane Davis or Sally Hoover who are the Outreach Committee organizers.

Finally, I'd like to express my gratitude for all the dedicated members at St. Luke's and the special ministries they carry out in God's name. We are a truly blessed community and have much to be thankful for.

I wish everyone a Happy Thanksgiving.

*Your sister in Christ,
Pat Fromberger*

P.S.: **Daylight Savings-Time Ends** on Sunday, November 6th (All Saints' Sunday)...so remember to set your clocks back the night before!

Imitating Christ

The biblical use of the term saint in the book of Acts ... applies to each of us. All who are attempting to imitate the Christ in their lives merit the title of saint. Some do it more fully than others and are willing to let go of more to get the job done. —Matthew Fox, *Confessions*

A Different Way Of Being Church

(Continued from page 1)

Tom asked us: "Do we see these individuals who come to St. Luke's for worship or an event as "fitting into" our existing way of life and ministry? In other words, Is our unspoken objective the understanding that they will learn from us? The bishop suggested a different approach in how we view newcomers: Instead of asking ourselves what it is we can offer, how about we open our hearts and minds to discover what it is they might offer us!

Our Scriptures teach that God often uses the "outsider" to challenge God's people on the "inside" to a different way of seeing and being the Church. As we enter into November and the beginning of a new church year, let us keep in mind Bob Dylan's song. The times are indeed changing. How will St. Luke's Church in Chester respond?

*In Christ together,
Heidi +*

2017 Stewardship Campaign:
Ingathering Sunday, Nov. 20th

The Stewardship Committee will be sending out the **2017 Pledge Cards** in the near future with the ingathering of pledges scheduled for the Sunday before Thanksgiving (November 20th) at which time all pledges will be brought with the offering to the altar. You may return your pledge either by mail or by placing them in the collection basket at a worship service.

It is important to have the cards returned in a timely manner so that the leadership can have a sense of the resources available for next year as they prepare the budget. Hopefully you have had a chance to consider the stewardship reflections mailed out this past month and have begun the process of prayerfully considering your financial support for St. Luke's.

I would also like to express my thanks to this year's Stewardship Committee, John Hoover and Eileen Widger. Their wise editorial comments helped make the reflections significantly more literate than I could have achieved on my own. —Doug Edson, *Stewardship Coordinator*

DECEMBER DEADLINE:

 **NOVEMBER 18th**

Send all announcements, articles, photos, etc. to:
Pat Fromberger, 180 Gates Rd., Andover, VT 05143
panjoe@vermontel.net

Highlights Of The Bishop's Homily And His Visit To St. Luke's

Bishop Thomas C. Ely made his annual visitation to St. Luke's, Chester on Sunday, October 16—a most fitting time as we were celebrating the Feast Day of Saint Luke the Evangelist. In his homily, Bishop Ely focused on Luke's gospel, telling us that Luke's story is an embracement of God's Dream and that we are to live with the power of this identity. "Hear it! Believe it! Live it!" exclaimed the Bishop. The central message of Luke's gospel is reconciliation. Love and healing is Jesus' focus...in his ministry and in his life. The heart of his mission is God's healing and making whole what is broken.

In the book of Acts, Luke is telling about the witnesses of others; of being transformed by their witness and putting that story into the scriptures. The Bishop said we are also called to share the message. Saint Paul referred to Luke as "the beloved physician"—always there/always faithful. Luke gave us the birth story of Christ and other stories. He emphasized the ministry of women and those on the margin. Bishop Tom's questions to us: "So what does that mean for us as members of St. Luke's, Chester? How do we live this identity (Saint Luke) for which we are known?"

Jesus in reading the scroll (passage from Isaiah) in the Synagogue was preaching radical inclusion justice for all. Preaching the Word of God was Jesus' mission in his daily life, but also in ours. Bishop Tom stated, "We are God's agents. What difference does this make in our lives?"

The Bishop had a chance to chat with St. Luke's parishioners after both the early and later services. He especially enjoyed sitting down with the children during the reception following the 10:00 a.m. worship. He welcomed questions from those gathered and shared some of what is happening in the Diocese. —*Pat Fromberger*



Wreath Workshops (Con't. from page 1)

Please also let me know if you have glue guns, clippers, or wire cutters to lend for the workshops or special ribbons, decorations, or natural materials to donate. We would especially appreciate unusual pine cones, berries (bayberries, juniper, ilex verticillata) and any more unusual evergreens (white or Scotch pine, holly, boxwood, blue spruce, cedar, juniper, arborvitae, etc.). Those berries and greens should be cut close to the workshop dates, and I would be happy to help with that task if you would like assistance. Please also let me know if you are willing to decorate one or more additional wreaths at the workshops that can be sold to others.

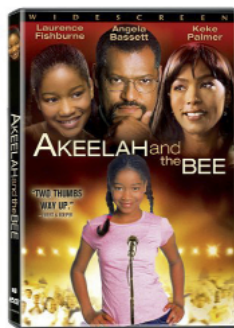
This is a great opportunity for people to support two good causes, start getting ready for the holidays, and have fun doing it! Hope you can join us!

—**Lillian Willis 875-1340; lbwillisct@comcast.net**

"The devil knows your name but calls you by your sin. God knows your sin but calls you by your name."

—*Ricardo Sanchez*

Saturday Night At The Movies



and obstacles that stand in the way of one's aspirations.

The movie debuts in the "Willard Hall Theater" (St. Luke's Episcopal Church) on **Saturday, November 19th**. The door will open at 6:00 p.m. for early seating and popcorn and soda. The show will begin at **6:30 p.m.** and will run just under two hours (1 hr. 52 min.). Please plan to come and bring the whole family. Invite your friends and neighbors to come, too! This movie is free of charge! For more information, contact Heidi+.

Returns this month! Our upcoming feature will be the movie, "Akeelah and the Bee." A family-friendly show, this is an inspirational story about an eleven year old girl from South Los Angeles who participates in the Scripps National Spelling Bee. This film is about the importance of having community support in overcoming challenges

October Vestry Meeting Highlights

As the last stages of fall settle in, we hope everyone will look at his or her pledge statements and, if it is necessary, catch up after a summer of vacations and visitors. The Vestry needs to start tackling the 2017 budget at its early November meeting and, therefore, needs to balance what we have with what we can expect.

- **Renovation Projects.** Workmen finished a number of exterior projects. The big front window has new “ears.” The carpenters completed the ramp and will add a gutter above it. They also feel they can repair, rather than replace, the big red doors, but not until the spring. The painter recommends that we let the ramp wood age and plan to paint it in the spring. The church sign will be moved at that time. Andrew Pennell has suggested names of a roofer and a plasterer, so a bid can be secured for those jobs. Tower windows have rot and need to be rebuilt, but are at the bottom of the work list. Therefore John DesLauriers would like to add a strip of wood inside to keep the windows from flexing. The trees in front that block the view of the church will be pruned after the leaves have fallen. The mess from tree trimming in the back will be removed.

- **Movie Nights.** Successful movie nights are encouraging the scheduling of more monthly flicks with popcorn to attract families. Suggestions for desirable films should be sent to Heidi.

- **Focus Topic: Communications, Publicity, and Website**

- **Communications.** Pat Fromberger reported that the total number of those who receive a printed copy of LITS is 113 (down 2 from last year). That figure does not count those who read online. The weekly Bulletins, whose user-friendly format only requires printing of the inserts or the printing of special services, will be expanded to include that alternative for the Advent and Easter seasons. While we know the new format saves on trees and waste, the financial saving for the entire year has not yet been calculated. The Church Directory was also updated and printed in 2016.

- **Publicity.** Bonnie Watters submitted a detailed written report, a copy of which is in the Vestry Minutes Notebook in the outer Church Office. In addition to her regular publicity, she showed the effective rack card and another long, thin poster she is investigating as a possible promotion. She also encourages everyone to send personal invitations to entice people to come to services or events.

- **Website.** Lew Watters also provided a written report for the Minutes Notebook. He said Marti Assenza, the Website Content Manager, is looking for pictures, information, and stories to expand website appeal. The website cost will double this year after the introductory bargain year ends in December, but Lew feels the new site is well worth the money and has attracted more people with longer visits to

Continue reading at top of page

the site. While he doesn't feel a Facebook page for St. Luke's is feasible, he wonders if individuals would be willing to post a picture and information about St. Luke's every now and then on their own pages in an effort to introduce more families to the church.

- **Christmas Tea & Sale is December 3rd.** A workshop will be held on October 17 to make felt ornaments. All are welcome to come, learn what to do, and help with special items.

- **The Nominating Committee** is looking for parishioners to join the Vestry. Please let Jane Davis or Jean Hancock know of your interest or suggestions you may have.

- **Wreath Workshops** are coming up in November. Please invite a friend and sign up early to reserve a place.

- **Next Vestry Meeting:** Monday, November 7. Focus Topic: Finance & 2017 Preliminary Budget. —*Lillian Willis*



Advent Adult Study

Our Sunday Adult Study Group that meets after the 10:00 a.m. Service has been reading and discussing the book, “Ecclesiastes: Annotated and Explained by Rabbi Rami Shapiro. It's been slow going with several interruptions due to conflicting events/activities at times. However, we are enjoying this book very much.

For the season of Advent, the Sunday Adult Study Group will engage in the six-week DVD Study on the Prophets currently in use by the Mid-Week Study Group (see next paragraph). Look for more information to come via the Sunday weekly announcements found in the bulletin.

Our Mid-Week Adult Study Group has been enjoying the DVD Series called, “Embracing the Prophets” by Walter Brueggemann. With one week left, we're now ready to move on to our next study.

Before launching into our Advent Study, the Mid-Week program will take a break for one week. Though early for Advent, we will resume our regular program of study on **November 16th.** Our Advent Study will be a short book entitled, “When God Comes Down: An Advent Study for Adults,” by James A. Harnish. This book, divided into five short chapters, will guide us into the meaning of Jesus' Incarnation. Participants will be led by Harnish's writing into a deeper understanding of the Nativity Event as viewed biblically, theologically and spiritually.

As we enter into Advent this month, I hope you will consider joining us in Willard Hall for Morning Prayer and Study each Wednesday. **Morning Prayer begins at 9:30 a.m.** and our **Study begins at 10:30 a.m. and ends at 11:30 a.m.** Let's journey together this year to Bethlehem. —*Heidi+*

About the Author: James A. Harnish is a retired United Methodist pastor who served a congregation in Tampa, Florida. He earned is BA at Asbury College and his MDiv at Asbury Theological Seminary. Rev'd Harnish has authored numerous books, Bible studies and articles.

Church School... A Sunday of Joy!

On Sunday, October 23rd I had the pleasure of joining our children downstairs in order to photograph their craft activity with Cindy Roundy-Winston creating gifts for Operation Christmas Child. What a joyful place to be, especially since one of my ears was covered with a bandage preventing my hearing the upstairs service. Following their usual prayer and sharing the lesson with Sean Whalen, Jane Davis lead the children singing about "Simple Gifts," beautifully tying the song with their craft activity.

Cindy had carefully prepared a table with a variety of materials for the children to decorate into personal gifts. There were paper cores to package writing paper, puppets to color, and Let's be Friends pages to color. Saul and I collaborated to make spinner tops. First, he drew a circle with a dark shape inside. What is it, I asked? A cave. Who lives there? A bear. So we had Sophia draw a perfect bear outside his den. Another top had an intricate web complete with a bright red spider in the center.

Probably the most fun for me was taking Saul's picture while running from one end of Willard Hall right into the camera lens. There will be many opportunities this school year for us adults to experience God's love in our children. —**Lew Watters**



Above: Aurora glues a paper puppets.
At Left: Penny decorates a paper roll.

(Church School Photos courtesy of Lew Watters)

We Invite You To Come Sing With Us For Advent & Christmas!

The choir and church musician would like to extend an invitation to any member of the congregation to sing with us for the Advent and Christmas season. If you love music and you want something to make your season a little brighter, singing is just the thing. We will be singing beautiful Christmas selections from a variety of styles on the 4 Sundays in Advent, the Lessons & Carols service on Sunday, December 18th, and on Christmas Eve. We will hold extra rehearsals for this special season on Sunday, November 13th after worship, and on one or two more dates to be determined. If you are interested please speak to Ashley Paine, email at amelissapaine@gmail.com, or speak to any choir member. We would love to have your voice join ours!



—**Ashley Paine, Church Musician**

The Outreach Corner

Vermont Foodbank Trip

On Tuesday, **October 17th** St. Luke's members Marcia Clinton and Tom Widger traveled to Brattleboro to work at the Vermont Foodbank. They met with Ed Katuska, the Manager of the Brattleboro branch of the Foodbank. He gave them a tour of the facility and set them to work repacking loads of donated apples. 'Tis the season...Typically volunteers would be sorting, checking dates, organizing and repacking donated food items.

Tom reported that he had a great time and would volunteer again. The Outreach Committee would like this to be a regular trip on the third Tuesday of every month. Our next scheduled visit is on **November 15th** from **1:00 p.m. to 3:00 p.m.** We will meet to carpool in the rear parking lot of the Church at Noon. Hope to see you there!!—*Jane Davis*

Operation Christmas Child



Thank you so much to all of the people who helped make things for the shoe boxes this past Sunday. The Sunday school kids did an AWESOME job with all of the projects. It seems like the stick puppets were the favorites.

The collection week for the Operation Christmas Child shoe boxes will be the **November 14-20**. Anybody who would like to decorate and fill boxes, can find the OCC brochures and shoe boxes in Willard Hall. The last day to bring completed boxes to the church will be on Sunday, November 20th. We will be having a small packing party on Sunday, **November 13th** after the 10:00 a.m. church service (up 100 shoe boxes need to be filled.) Please join us. We are short of soap and mittens for the shoe boxes. Any would be greatly appreciated. Thank you very much for the donations of the stuffed animals, washcloths, and school supplies.—*Cindy*

Soldiers

I am receiving the name of one soldier every single day who gets no mail! If they are not adopted by an individual, they will only get the one small packet I send out to them during their entire deployment. Please be generous in signing some cards every week for these lonely soldiers. A thank you, have a nice day, or other generic message would be very welcomed. Thank you very much!

Welcome To St. Luke's Sale-On-The-Screen



I often use the above banner prior to a description of the article offered for sale followed by "All proceeds and donations to go to St. Luke's Episcopal Church Chester, VT general fund." Most of the time purchasers don't even haggle over price

knowing the funds are going to support a St. Luke's. I even have had a few pay over the asking price!

Each year we have a variety of items that run the gamut and now and then a theme seems to develop. This year, while we do have silverware to looms, we seem to be developing a "Wood Products" theme. We have sold a chainsaw, a wood stove, and currently have a listing for a table saw (see photo), a solid oak coffee table and soon will be listing a bench top wood planer.

Our goal is \$1000 this year and with one or two more sales we could meet or even exceed that number. I will be listing items through October (each listing stays on for 45 days) so stay tuned for the final update and thank you to all who have donated items for sale this year.

—*John DesLauriers*

9th Annual Chester Area Coat & Blanket Drive... Thank You!

A hearty thanks to all of you who generously donated your wintery clothing and blankets and boots. I took 5 HUGE black trash bags from St. Luke's to Saint Joseph's to be sorted into sizes and categories. And, I haven't even emptied the bins in the Sanctuary!! It isn't too late to donate. October 30th will be the last day to bring your winter items to the church.



Distributions will take place on **November 5th** and **12th** from **10:00 a.m. to 1:00 p.m.** at the parish hall at **Saint Joseph's Church**. All items are free, as is a light lunch of soup and bread that will be available. Please spread the word to anyone you know who might be able to take advantage of this annual, interdenominational effort.

"If we are not planted in Christ, we'll be uprooted in crisis."

—*Author Unknown*

We Are Gearing Up For St. Luke's Annual Christmas Tea & Sale On December 3



Mark your calendars! St. Luke's Christmas Tea & Sale is four weeks away, taking place on Saturday, **December 3, 11:00 a.m.-3:00 p.m.** in Willard Hall. This annual fundraising event is looked forward to with a great deal of anticipation by friends, neighbors and visitors to the Chester community, not only because of the delicious and satisfy-

ing "Tea Fare" being offered...but for the warm fellowship those attending experience on this special day. In addition there are plenty of hand-crafted items, jams, jellies, relishes, custom chocolates and other baked holiday foods to be purchased for gift-giving.

In the coming weeks expect to receive a phone call from a member of the "kitchen crew" asking you to make food items specifically for the buffet table. Other donations we are seeking for the "Sale" portion of this event include hand-made items (such as quilted runners, decorative hangings, potholders, tree skirts), Christmas tree ornaments, decorations, and knitted scarves. We appeal to the many talented cooks in our parish to help fill the "Holiday Food Table" with an offering of baked goods, party snacks, candies, jams, pickles and such. Again this year we are seeking fresh items for "Grandma's Attic." (Read the article below.)

Look for a "Christmas Tea Sign-Up Sheet" soon to appear at the rear of the church. In addition to certain supplies such as lemons, cider, tea bags, sugar & cream, we will need "tea pourers" to sign up for a shift between 11:00 a.m. and 2:00 p.m. on the day of the tea. Young children are welcomed to help as servers. Helping hands to set up on the Friday before the "Tea" and to clean up after the day on Saturday are most welcome.

If you have questions about what is needed in the way of donations or if you want to volunteer helping on the day of this event, please speak to **Adelaide Johnson** or **Pat Fromberger (875-3548)**, 2016 Christmas Tea & Sale co-chairs.

Grandma's Attic Donations Sought

Grandma's Attic is always a popular draw at the Christmas Tea with a truly eclectic assortment of items including decorative serving dishes, bowls, glassware, vases, unusual houseplant containers, picture frames, artwork, figurines, kitchen tools, gadgets, costume jewelry, toys, puzzles, games and other Christmas decorative miscellany—to name a few. We could use some fresh donations this year, so please look around your home for items you may no longer use or perhaps a gift someone else would love more than you. It doesn't need be new but it should be in very good condition. No books please, unless they are exceptional (for example a child's picture book in excellent condition) and no coffee mugs! All items should be brought to the church no later than Friday morning, December 2. If you have any questions about what to donate, please feel free to call either Adelaide Johnson (875-4634) or Pat Fromberger (875-3548). Many thanks. —**Adelaide & Pat**



Meetings & Events

WEEKLY

• Sunday Adult Formation Study:

Sundays, following the 10:00AM worship service from 11:35AM-12:30PM in the Rector's Study. We just began our study on "Ecclesiastes" (using Rabbi Rami Shapiro's book) along with the Bible. All are welcome to join us.

• Lunch Bunch Book Study:

Mondays, **Noon-1:15PM** in Willard Hall for a bag lunch, discussion & prayer. We are reading, *The Five People You Meet In Heaven*, by Mitch Albom. All are welcome to join us.

• Mid-Week Morning Prayer and Adult Formation Study:

Wednesdays: Morning Prayer: **9:30AM**; Adult Study: **10:30AM**, in Willard Hall. On **Nov. 16th** we will begin an Advent study on "When God Comes Down", by James Harnish. (See article on page 4.) All are welcome to join us.

• St. Luke's Choir Rehearsals:

Sundays at **9:00AM** for warm-up & rehearsal in the church nave. Special rehearsals will be held on as needed. We welcome new members. Speak to Ashley Paine, church musician, if you are interested. Read article on page 5.

LESS THAN WEEKLY

• Vestry Monthly Meeting:

Monday, **November 7th** in Willard Hall. **6:30PM** for Bible reflections; **7:00PM** for the regular agenda. Focus is: "Finance/Preliminary Budget." All parishioners are welcome to attend.

• Annual Mutual Ministry Review:

Wednesday, **November 9th** in Willard Hall. **5:00PM-8:00PM**, in Willard Hall. The Rector & Vestry will meet with Lynn Bates to review the ministries at St. Luke's and set goals.

• Church School Meeting:

Tuesday, **November 8th 10:00AM** in Willard Hall to talk about and plan the next quarter of the Children's program here at St. Luke's.

• Saturday Night at the Movies:

Saturday, **November 19th, 6:30PM.** in Willard Hall. "Akeelah & the Bee." See article on page 3 for details. A family friendly film.

NOVEMBER CELEBRATIONS

Birthdays:

1 Elizabeth Assenza	22 Richard Hunter
9 Doug Edson	26 Dale Deming
12 Marti Assenza	29 Ashley Hensel-Browning
13 Luke Allen Pennell	26 Joe Fromberger
14 Samuel Buchanan	
15 Lily Jones	
17 Peter Rosengarten	
15 Norman Wright	
18 Betsy Stretton	
19 Carter Evelyn Willis	
20 Julie Hoyt	

Anniversaries:

18 Bill & Leigh Dakin
18 Sean & Ashley Hensel-Whalen

“St. Luke’s
is an
intentional
Christian
community,
deepening faith
and
broadening
love.”

☛ **REMINDER: Daylight Savings-Time Ends on Sunday, Nov. 6th. Set your clocks back the night before.**

✠ WORSHIP SCHEDULE ✠

Nov. 6 ALL SAINTS’ SUNDAY

8:00 AM Holy Eucharist, Rite I

10:00 AM Holy Eucharist, Rite II

Nov. 13 XXVI PENTECOST (Proper 28)

8:00 AM Holy Eucharist, Rite I

10:00 AM Holy Eucharist, Rite II

Nov. 20 LAST PENTECOST (Proper 29)

Christ The King Sunday

8:00 AM Holy Eucharist, Rite I

10:00 AM Holy Eucharist, Rite II

Nov. 27 I ADVENT

8:00 AM Holy Eucharist, Rite I

10:00 AM Holy Eucharist, Rite II

☛ **CHURCH SCHOOL:** Sundays, 10:00 a.m. starting in church and children recessing to Willard Hall following “The Collect.”

St. Luke’s Episcopal Church

The Rev. Heidi L. Edson, Rector

313 Main Street, Chester, VT 05143 • Office Phone: 875-6000

www.stlukesepiscopalvt.org

St. Luke’s Church is Handicapped Accessible

Light in the Shadows

St. Luke’s Episcopal Church
P. O. Box 8, Chester, VT 05143
Return for ADDRESS CORRECTION
Or if Undeliverable

